



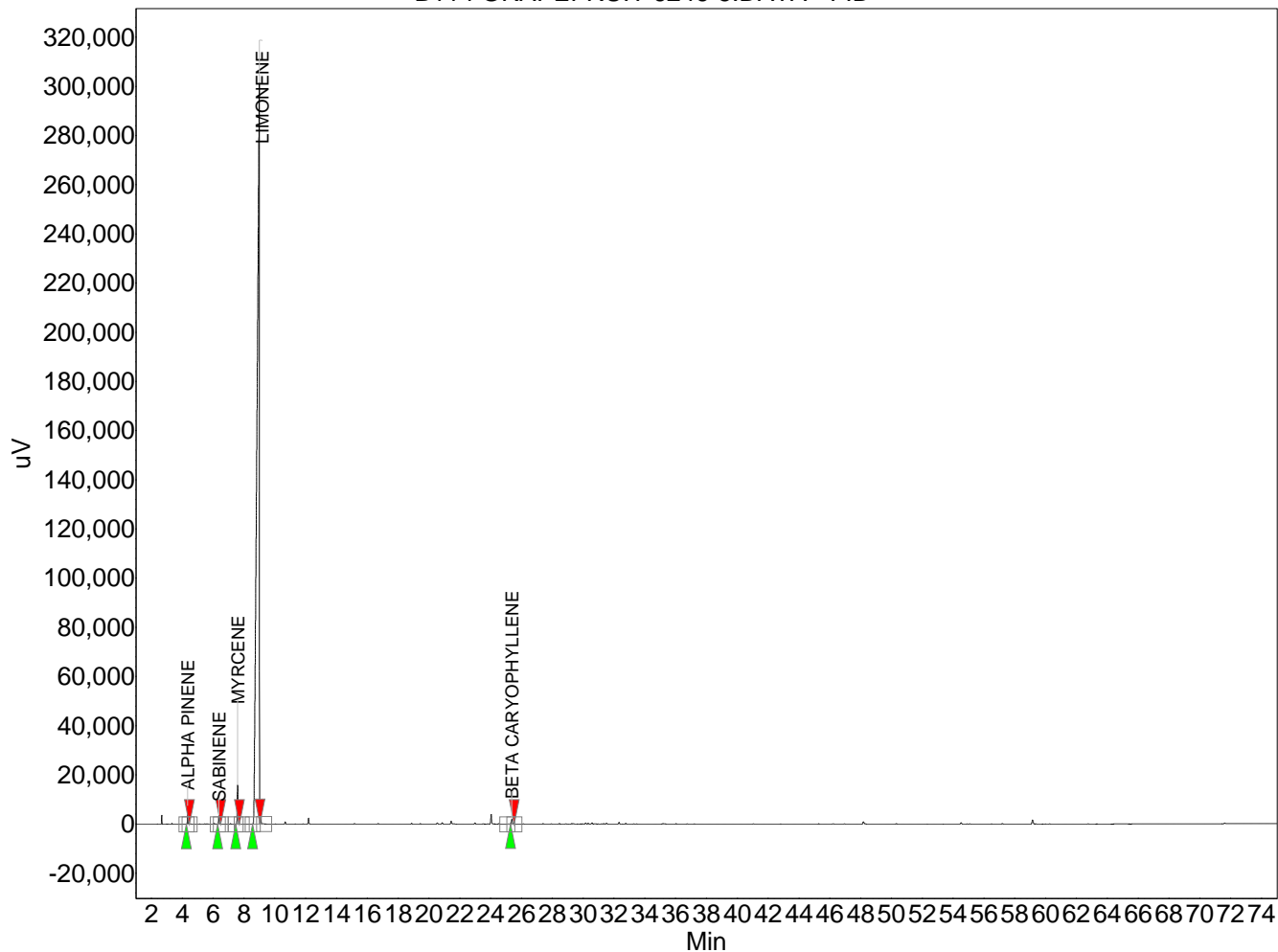
Absolute Aromas Ltd.
 Alton, Hampshire, UK.
 GU34 2QL
 lab@absolute-aromas.com
 www.absolute-aromas.com

Analysis : B114 GRAPEFRUIT 6246-5

Instrument : Varian 430-GC
 Method : Method 1
 User : Chris Payne

Acquired : 27/09/2013 10:55:47
 Processed : 04/10/2013 10:40:22
 Printed : 04/10/2013 10:40:55

B114 GRAPEFRUIT 6246-5.DATA - FID



Peak results :

Index	Name	Time [Min]	Area [uV.Min]	Height [uV]	Area % [%]
1	ALPHA PINENE	4.35	266.5	7475.6	0.473
2	SABINENE	6.37	176.2	3686.1	0.313
3	MYRCENE	7.59	944.9	15973.9	1.678
4	LIMONENE	9.00	54786.4	301539.7	97.275
5	BETA CARYOPHYLLENE	25.38	147.4	2042.9	0.262
Total			56321.4	330718.2	100.000