



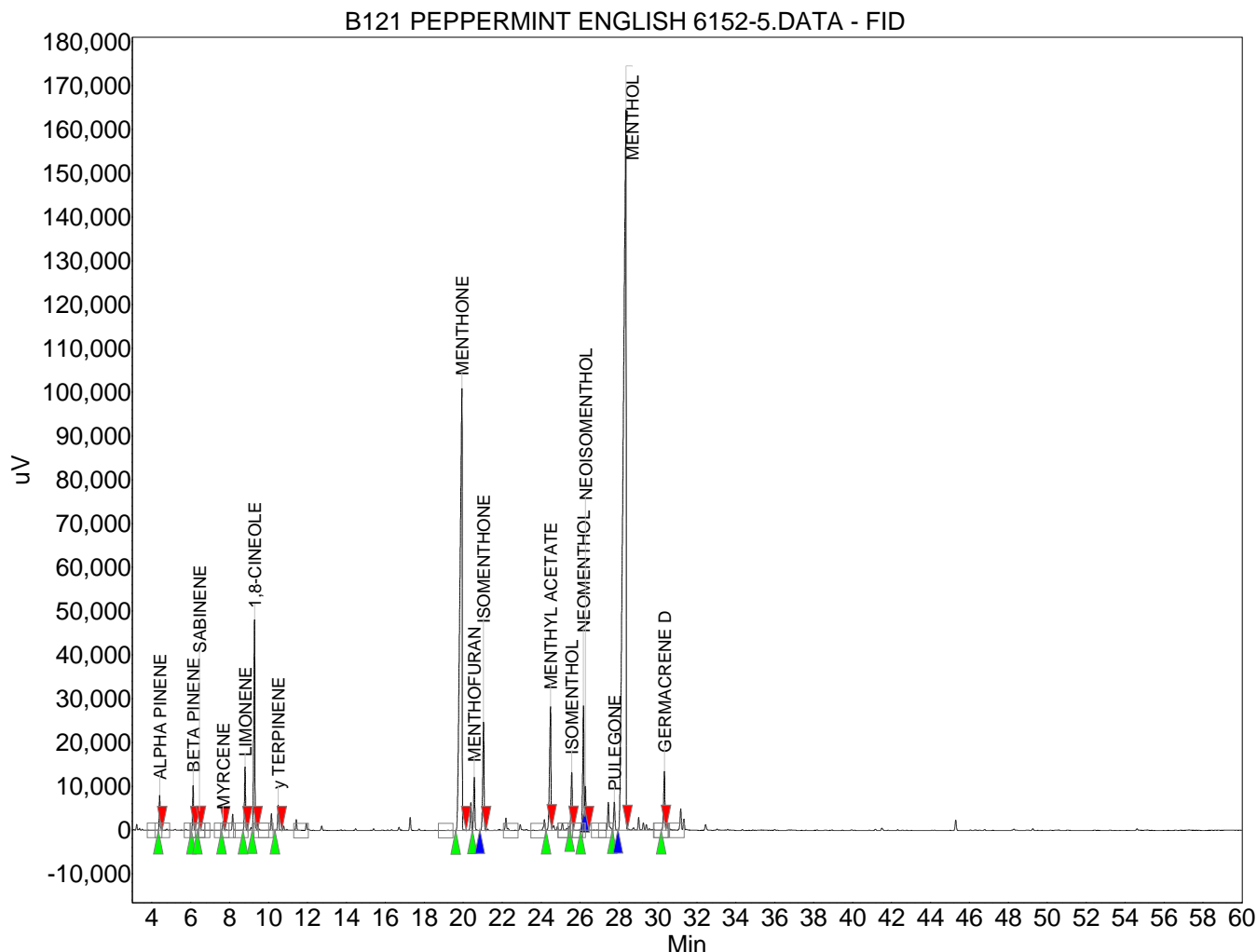
Absolute Aromas Ltd.
Alton, Hampshire, UK.
GU34 2QL

lab@absolute-aromas.com
www.absolute-aromas.com

Analysis : B121 PEPPERMINT ENGLISH 6152-5

Instrument : Varian 430-GC
Method : Method 1
User : Chris Payne

Acquired : 02/08/2013 14:15:55
Processed : 02/08/2013 16:08:29
Printed : 02/08/2013 16:09:39



Peak results :

Index	Name	Time [Min]	Area [uV.Min]	Height [uV]	Area % [%]
1	ALPHA PINENE	4.41	429.3	8071.7	0.737
2	BETA PINENE	6.12	564.7	10273.5	0.970
3	SABINENE	6.45	236.0	4330.4	0.405
4	MYRCENE	7.66	128.7	2164.8	0.221
5	LIMONENE	8.79	888.9	14521.3	1.526
6	1,8-CINEOLE	9.28	3169.8	48163.8	5.442
7	gamma TERPINENE	10.49	356.9	5801.5	0.613
8	MENTHONE	19.93	13678.9	100970.2	23.484
9	MENTHOFURAN	20.57	869.8	12210.0	1.493
10	ISOMENTHONE	21.04	1923.1	24749.6	3.302
11	MENTHYL ACETATE	24.48	2344.4	28295.4	4.025
12	ISOMENTHOL	25.57	997.4	13258.3	1.712
13	NEOMENTHOL	26.17	2111.7	28503.6	3.625
14	NEOISOMENTHOL	26.27	706.6	10111.2	1.213
15	PULEGONE	27.76	493.4	6518.5	0.847
16	MENTHOL	28.35	28305.4	164645.2	48.595
17	GERMACRENE D	30.33	1042.8	13480.7	1.790



Absolute Aromas Ltd.
Alton, Hampshire, UK.
GU34 2QL
lab@absolute-aromas.com
www.absolute-aromas.com

Analysis : B121 PEPPERMINT ENGLISH 6152-5

Instrument : Varian 430-GC
Method : Method 1
User : Chris Payne

Acquired : 02/08/2013 14:15:55
Processed : 02/08/2013 16:08:29
Printed : 02/08/2013 16:09:39

Index	Name	Time [Min]	Area [uV.Min]	Height [uV]	Area % [%]
Total			58247.9	496069.6	100.000