

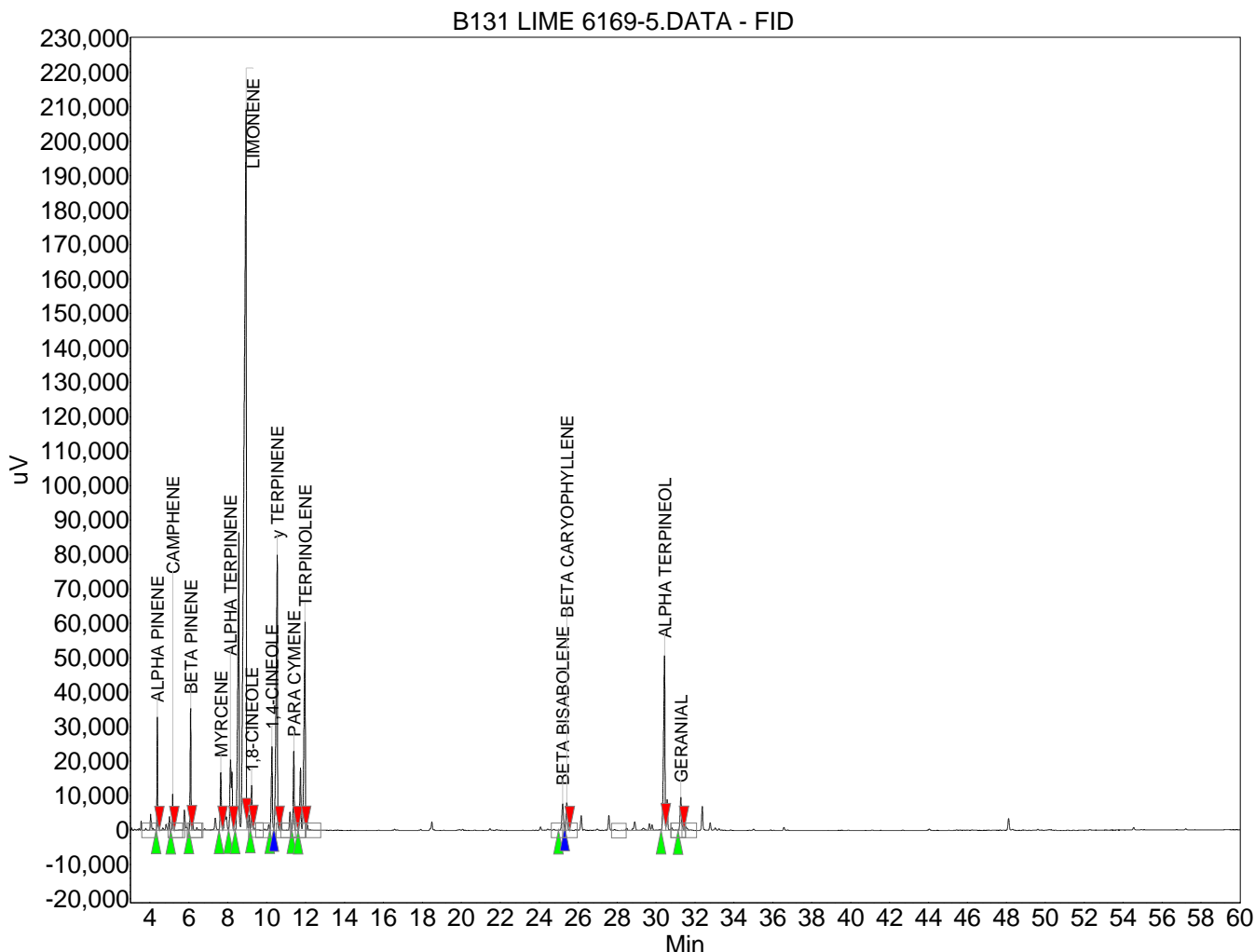


Absolute Aromas Ltd.
Alton, Hampshire, UK.
GU34 2QL
lab@absolute-aromas.com
www.absolute-aromas.com

Analysis : B131 LIME 6169-5

Instrument : Varian 430-GC
 Method : Method 1
 User : Chris Payne

Acquired : 24/07/2013 09:30:41
 Processed : 24/07/2013 12:14:33
 Printed : 24/07/2013 12:16:29



Peak results :

Index	Name	Time [Min]	Area [uV.Min]	Height [uV]	Area % [%]
1	ALPHA PINENE	4.38	1192.8	32939.4	1.876
2	CAMPHENE	5.17	443.9	10546.3	0.698
3	BETA PINENE	6.09	1660.2	35430.7	2.611
4	MYRCENE	7.64	1063.9	16759.2	1.673
5	ALPHA TERPINENE	8.14	2418.2	20488.1	3.802
6	LIMONENE	8.94	34214.5	209285.5	53.800
7	1,8-CINEOLE	9.23	701.5	13069.1	1.103
8	1,4-CINEOLE	10.27	1602.2	24324.4	2.519
9	γ TERPINENE	10.54	6538.3	79974.0	10.281
10	PARA CYMENE	11.39	1352.5	23064.8	2.127
11	TERPINOLENE	11.97	5942.3	60524.2	9.344
12	BETA BISABOLENE	25.21	758.0	7699.2	1.192
13	BETA CARYOPHYLLENE	25.41	671.7	8048.7	1.056
14	ALPHA TERPINEOL	30.44	4249.1	50835.9	6.682
15	GERANIAL	31.27	786.2	9644.0	1.236
Total			63595.2	602633.4	100.000