

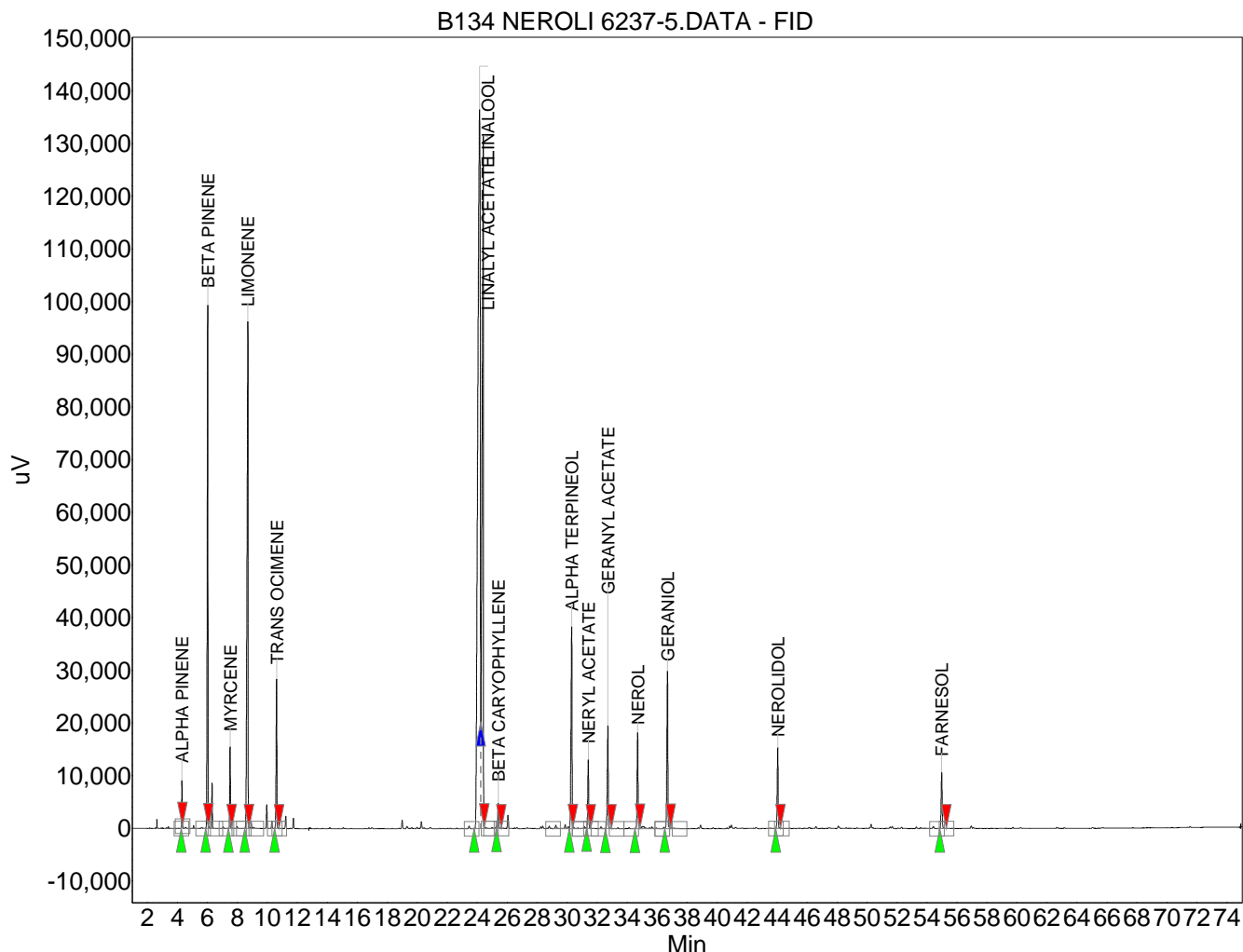


Absolute Aromas Ltd.
 Alton, Hampshire, UK.
 GU34 2QL
 lab@absolute-aromas.com
 www.absolute-aromas.com

Analysis : B134 NEROLI 6237-5

Instrument : Varian 430-GC
 Method : Method 1
 User : Chris Payne

Acquired : 23/09/2013 14:30:13
 Processed : 04/10/2013 12:05:37
 Printed : 04/10/2013 12:06:13



Peak results :

Index	Name	Time [Min]	Area [uV.Min]	Height [uV]	Area % [%]
1	ALPHA PINENE	4.31	287.2	8872.4	0.436
2	BETA PINENE	6.03	5115.4	99376.2	7.771
3	MYRCENE	7.52	734.7	15545.6	1.116
4	LIMONENE	8.71	7393.6	96245.6	11.232
5	TRANS OCIMENE	10.62	1605.2	28390.3	2.438
6	LINALOOL	24.15	26108.1	136542.4	39.661
7	LINALYL ACETATE	24.41	13603.5	131568.9	20.665
8	BETA CARYOPHYLLENE	25.40	319.4	4811.0	0.485
9	ALPHA TERPINEOL	30.30	2947.7	38365.5	4.478
10	NERYL ACETATE	31.41	899.1	13078.9	1.366
11	GERANYL ACETATE	32.72	1423.0	19605.9	2.162
12	NEROL	34.70	1343.3	18289.4	2.041
13	GERANIOL	36.69	2194.9	29932.5	3.334
14	NEROLIDOL	44.04	1057.8	15339.7	1.607
15	FARNESOL	54.98	795.5	10636.4	1.208
Total			65828.3	666600.8	100.000