



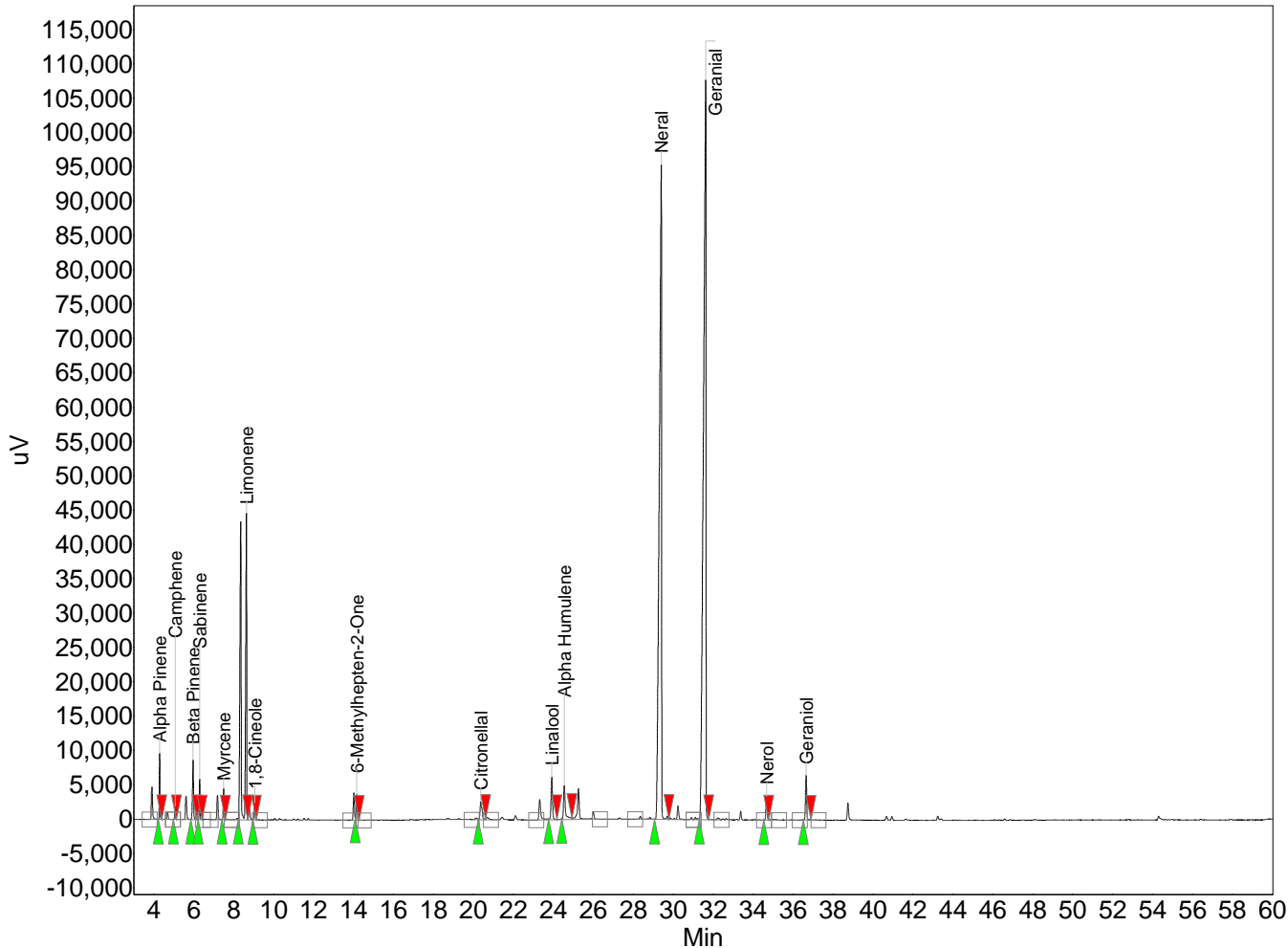
Absolute Aromas Ltd.
Alton, Hampshire, UK.
GU34 2QL
lab@absolute-aromas.com
www.absolute-aromas.com

Analysis : B174 MAY CHANG 6117-1

Instrument : Varian 430-GC
 Method : May Chang
 User : Chris Payne

Acquired : 25/06/2013 14:00:35
 Processed : 26/06/2013 16:20:03
 Printed : 26/06/2013 16:21:14

B174 MAY CHANG 6117-1.DATA - FID



Peak results :

Index	Name	Time [Min]	Area [uV.Min]	Height [uV]	Area % [%]
1	Alpha Pinene	4.29	329.7	9646.9	0.879
2	Camphene	5.07	75.4	1884.8	0.201
3	Beta Pinene	5.96	513.6	8688.8	1.370
4	Sabinene	6.30	255.2	5915.2	0.681
5	Myrcene	7.49	215.7	4575.0	0.575
6	Limonene	8.63	5610.2	44698.6	14.963
7	1,8-Cineole	9.04	132.1	2465.1	0.352
8	6-Methylhepten-2-One	14.16	229.9	3770.4	0.613
9	Citronellal	20.36	285.2	2610.5	0.761
10	Linalool	23.92	539.5	6197.9	1.439
11	Alpha Humulene	24.54	540.2	4988.2	1.441
12	Neral	29.40	12483.6	95378.4	33.296
13	Geranial	31.63	15593.4	107805.6	41.590
14	Nerol	34.67	237.2	3456.6	0.633
15	Geraniol	36.65	451.8	6535.7	1.205
Total			37492.7	308617.6	100.000