



Absolute Aromas Ltd.  
Alton, Hampshire, UK.  
GU34 2QL

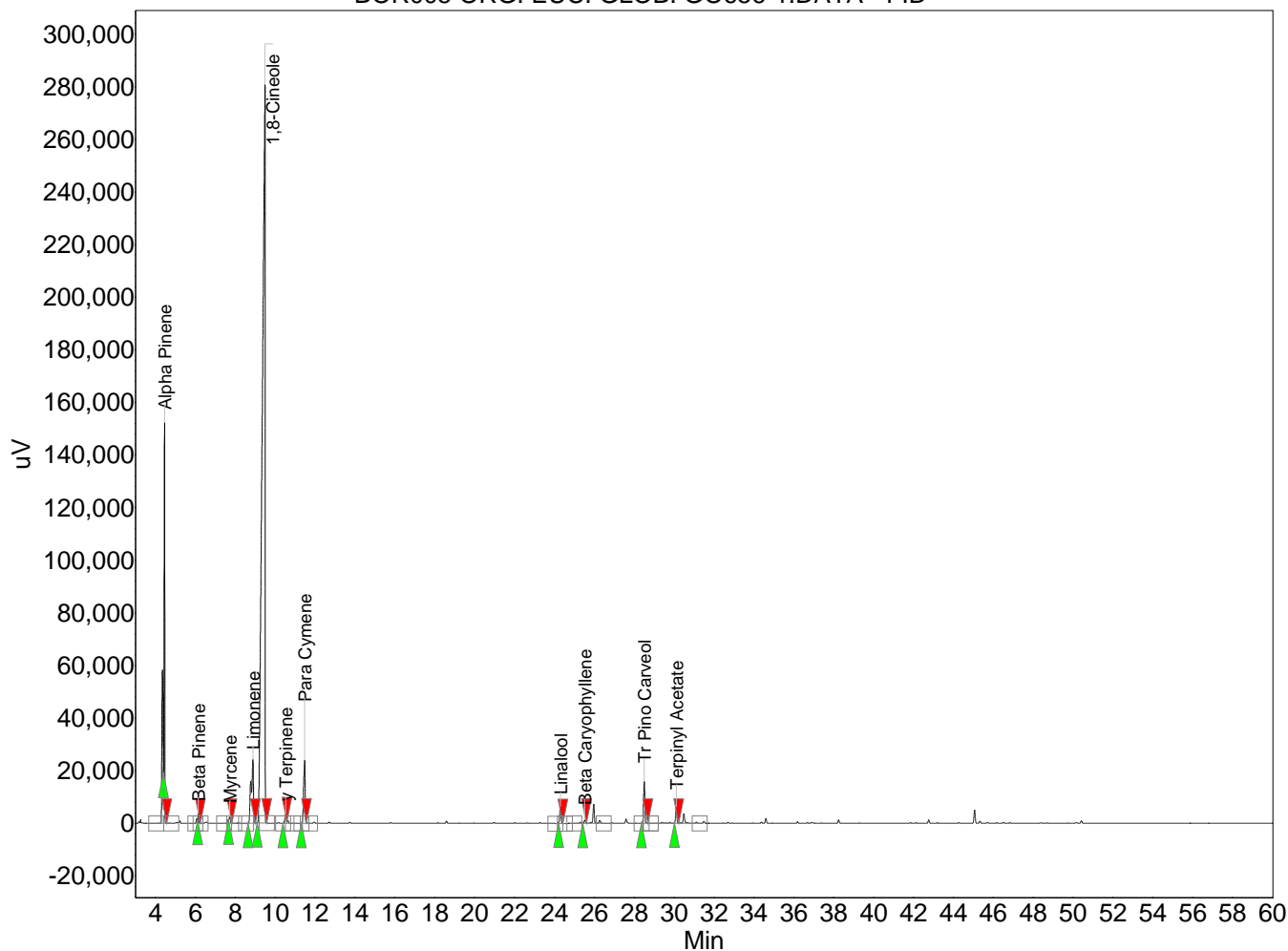
lab@absolute-aromas.com  
www.absolute-aromas.com

Analysis : BOR005 ORG. EUC. GLOB.  
GO656-1

Instrument : Varian 430-GC  
Method : Euc Globulus  
User : Chris Payne

Acquired : 05/10/2012 10:42:05  
Processed : 05/10/2012 12:20:51  
Printed : 05/10/2012 12:21:39

BOR005 ORG. EUC. GLOB. GO656-1.DATA - FID



**Peak results :**

Index	Name	Time [Min]	Area [uV.Min]	Height [uV]	Area % [%]
1	Alpha Pinene	4.45	5980.4	152386.5	9.765
2	Beta Pinene	6.15	180.3	3819.1	0.294
3	Myrcene	7.72	180.5	2424.1	0.295
4	Limonene	8.88	3255.5	24152.9	5.316
5	1,8-Cineole	9.49	47089.3	280816.4	76.889
6	γ Terpinene	10.52	276.3	3461.3	0.451
7	Para Cymene	11.48	2094.3	23895.6	3.420
8	Linalool	24.30	483.7	6494.3	0.790
9	Beta Caryophyllene	25.52	88.6	1249.0	0.145
10	Tr Pino Carveol	28.50	1172.6	15954.3	1.915
11	Terpinyl Acetate	30.11	442.0	6306.8	0.722
Total			61243.4	520960.4	100.000